



Rivercrest® Wall

1-800-UNILOCK | UNILOCK.COM

UNILOCK
PAVERS & WALLS

RIVERCREST® WALL

STONEMARK™

Exclusive to **UNILOCK**



BUFF



COASTAL SLATE

PRODUCT ATTRIBUTES

Visual Appearance	Stacked flagstone.
Finish	Stonemark™ naturally detailed surface resembling stacked flagstone.

PRODUCT SPECIFICATIONS



STANDARD UNIT 1
8 x 9-10 x 2¼"
200 x 230-250 x 57mm



STANDARD UNIT 2
12 x 9-10 x 2¼"
300 x 230-250 x 57mm



STANDARD UNIT 3
12 x 9-10 x 2¼"
300 x 230-250 x 57mm



STANDARD UNIT 4
17 x 9-10 x 2¼"
425 x 230-250 x 57mm



RIVERCREST FIREPIT KIT
Unilock Reduced Smoke insert option also available. See page 168

4 UNIT RANDOM BUNDLE



JUMPER UNIT 1
8 x 9-10 x 4½"
200 x 230-250 x 114mm



JUMPER UNIT 2
12 x 9-10 x 4½"
300 x 230-250 x 114cm



JUMPER UNIT 3
12 x 9-10 x 4½"
300 x 230-250 x 114mm



JUMPER UNIT 4
17 x 9-10 x 4½"
425 x 230-250 x 114mm



JUMPER CORNER UNIT
12 x 9-10 x 4½"
300 x 230-250 x 114mm

4 UNIT JUMPER BUNDLE

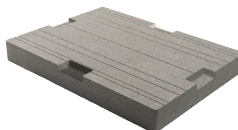
RAPID PILLAR SYSTEM



LONG CORNER UNIT
17½ x 9-10 x 2¼"
450 x 230-250 x 57mm



SHORT CORNER UNIT
14½ x 9-10 x 2¼"
375 x 230-250 x 57mm



U-GRIP™ BASE PAD
14 x 19 x 2"
355 x 482 x 55mm



COMPLETED UNIT SHOWN



PILLAR UNIT
20 x 20 x 4½"
500 x 500 x 114mm
Pillar cap sold separately

2 UNIT CORNER BUNDLE

TECHNICAL INFORMATION

ASTM C 1372 Standard Specifications for Dry-Cast Segmental Retaining Wall Units

Conforms to:

- C140 for Absorption and Compressive Strength > 3000 PSI
- C1262 for Freeze Thaw Durability <1% mass loss
- C1372 Overall dimensional variations permissible for width, height and length +/-3 mm

Unilock standards exceed 5,000 PSI for Rivercrest® Wall products with:

- 4% absorption avg.
- 5% absorption max.
- Dimensional Accuracy +/-3 mm

Test results available upon request

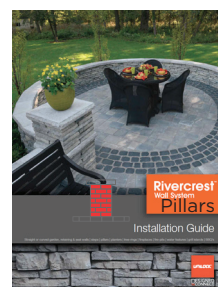
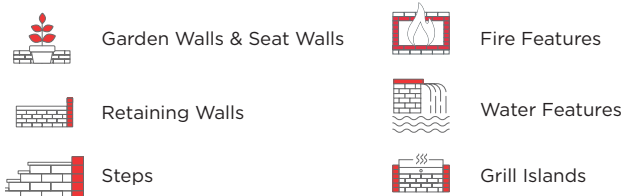
Meets the U.S. Architectural & Transportation Barrier Compliance Board Slip-Resistance Surfaces Advisory Guidelines

PRODUCT DATA

Stones & Bundling	Face Feet Per		Linear Feet Per		Units Per		Per Bundle		Lbs Per	
	Bundle	Unit	Bundle	Unit	Bundle	Face Feet	Layers	Sections	Unit	Bundle
Standard and Corner Units - Ayr Manufacturing / Jumpers, Pillar units Georgetown Manufacturing										
Wall Standard Bundle:	24.30		130.69		128		8		15	1,902
Standard Unit 1	3.93	0.123	20.99	0.656	32	8.15				
Standard Unit 2	6.09	0.190	32.54	1.017	32	5.26				
Standard Unit 3	6.09	0.190	32.54	1.017	32	5.26				
Standard Unit 4	8.20	0.256	44.61	1.394	32	3.90				
Wall Jumper Unit Bundle:	24.30		65.34		64				39	2,495
Jumper Unit 1	3.93	0.245	10.50	0.656	16	4.07				
Jumper Unit 2	6.09	0.380	16.27	1.017	16	2.63				
Jumper Unit 3	6.09	0.380	16.27	1.017	16	2.63				
Jumper Unit 4	8.20	0.513	22.30	1.394	16	1.95				
Corner Unit Bundle:	16.21		-		40				29	1,173
Long Corner Unit	8.52	0.426	-	-	20	2.35				
Short Corner Unit	7.69	0.385	-	-	20	2.60				
Corner Jumper Unit	21.61	0.675	-	-	32	1.48			40	1,200
Pillar 20" x 20"			-	-	8				117	934
U-GRIP Base Pad			85.39	1.581	54		9		46	2,500

Notes: Sold on refundable skid - full bundles only. Rivercrest is recommended for walls under 2ft. Ideal for straight or curved walls, seat walls, pillars, tree rings, planters, firepits and grill islands. Integrated connectors require no pins or clips. Minimum radius using equal amounts of each unit is 1.25m / 4.1ft. Using only unit 1 & 3 a 1.055m / 3.5ft radius can be achieved. Engineering services are available. Contact your Unilock Territory Manager or call 1-800-UNILOCK for further information. *For custom options, please contact your Unilock Territory Manager.

APPLICATIONS



Refer to the Rivercrest Installation Guide for more information.
<https://www.risistone.com/installation-guides/>

For coping options, we recommend using LedgeStone™ or Natural Stone.

*Things to know:

- Rivercrest® is recommended for walls under 2 ft.
- Ideal for straight or curved walls, seat walls, pillars, tree rings, planters, fire pits and grill islands.

For Rivercrest® Wall, Unilock, through **Risi Stone Systems International**, can provide preliminary site engineering for most commercial projects. Soils information, site drawings, and loading requirements are some of the information details required in order to provide this preliminary site engineering.

Retaining wall engineering software is also available free of charge. Contact your local Unilock representative for details.

For more information please visit <https://www.risistone.com/product/rivercrest/>.

LEED INFORMATION

Materials & Resources: LEED V4:

Building Product Disclosure and Optimization

Sourcing of Raw Materials - Sourcing of Raw Materials and Extraction • **1 point**

Sourcing of Raw Materials - Leadership Extraction Practices • **1 point**

Material Ingredient Reporting - Material Ingredient Reporting • **1 point**

Material Ingredient Reporting - Material Ingredient Optimization • **1 point**

Environmental Product Declaration • **1 point**

If required, summary test data shall be provided with the SRW Design and shall include:

a) SRW Unit shear strength as per ASTM D6916

b) SRW Unit - Geosynthetic Reinforcement connection strength as per ASTM D6638